

# Kaymar

## Fitting Instructions



Suitable for  
**Toyota LandCruiser 80**  
Year  
Type  
Part **RHS STD Carrier**

Applicable to Part Numbers  
**K1110**

Date published October 15, 2019

### IMPORTANT - BEFORE COMMENCING INSTALLATION

Please verify the part number corresponds with the list above.

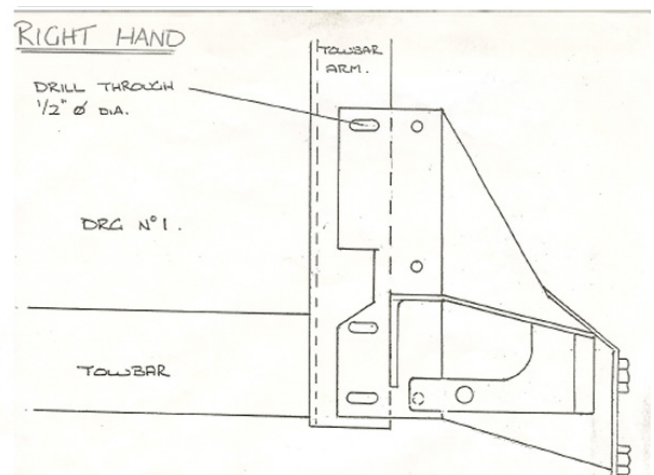
Read through these instructions and check items in the supplied fitting kit matches the attached list.

Every effort is made to ensure instructions are as accurate as possible at the time of publishing however work should not be commenced until the document has been thoroughly read, measurements checked and all components in the package verified as complete. Kaymar has used reasonable care in preparing the information included in these documents, but makes no representations or warranties as to the completeness or accuracy of the information. Information is supplied upon the condition that the persons receiving the information will make their own determination as to its suitability for their purposes prior to use. Kaymar assumes no liability whatsoever for any damages incurred by you resulting from errors in or omissions from the information included herein. Kaymar reserves the right to make changes without further notice to any products to improve reliability, function or design.

### Suitable for 80 LANDCRUISER RHS WHEEL CARRIER TO STANDARD BAR

Read 80 Series Auxiliary light instructions to ensure correct fitment sequence.

1. Remove plastic corner bumperette and mudflap on the right hand side. Remove existing exhaust bracket and fit replacement bracket supplied. NB if the vehicle has a genuine Hayman Reese towbar fitted, or alternatively, no towbar at all, the next two steps are unnecessary.
2. If the vehicle has a towbar fitted, which is not a H/R and it comes across to pick up the first two bolt holes in the chassis, the towbar MUST be removed and the 6mm packer welded to the first two holes, on the towbar arm must be removed. The wheel carrier bracket (No. 1) will take the place of these.
3. Line up the No. 1 bracket with the holes in the towbar arm and mark through the bracket onto the towbar arm (see diagram 1) the position of the foremost hole in the No. 1 bracket. Drill this out to 1/2" a.

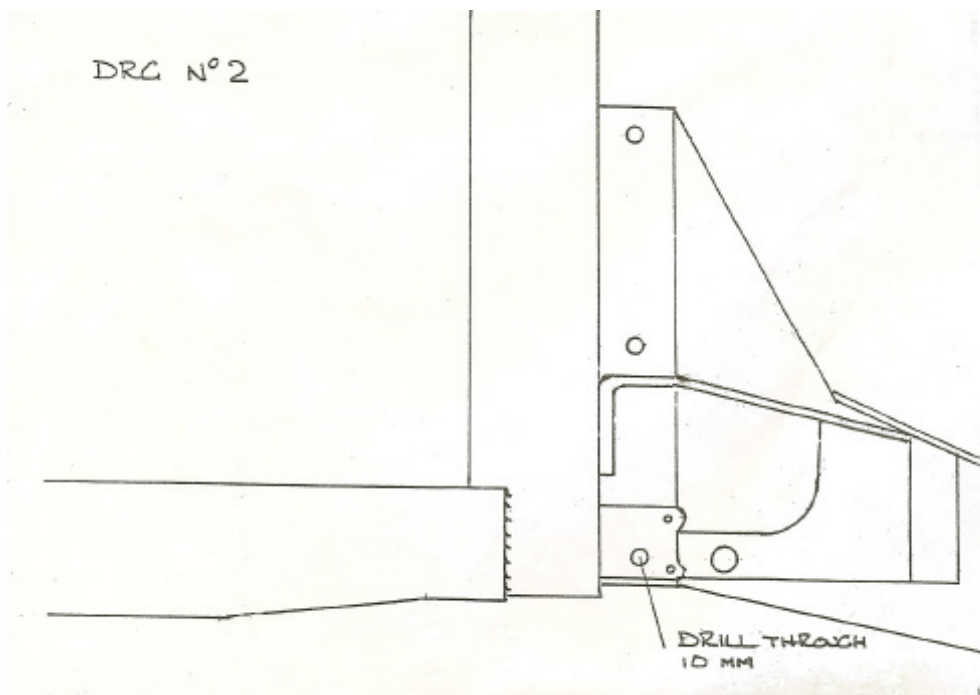


# Kaymar

## Fitting Instructions



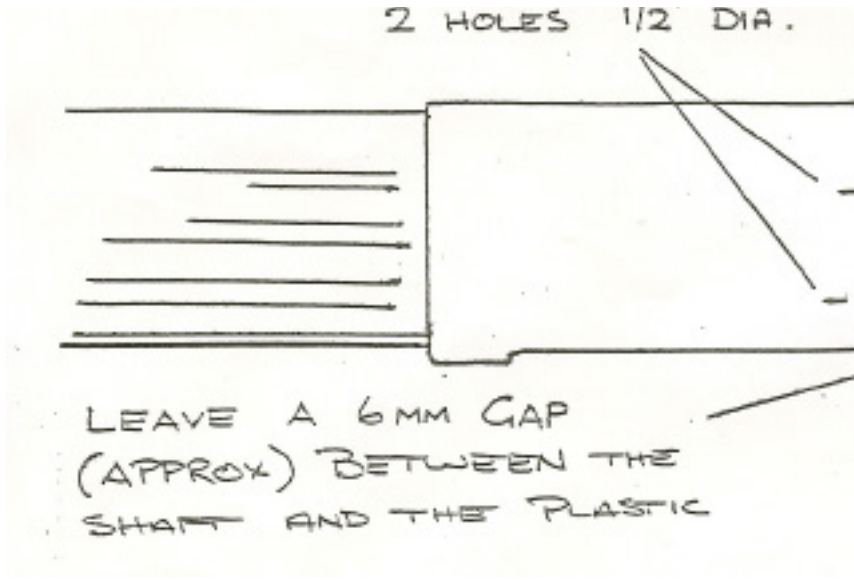
4. Fit the No. 1 bracket to the chassis using the 12mm x 35 fine thread bolts in the first two holes. For late model vehicles you will need to fit the flat plate with two fine thread nuts welded on, into the chassis first.
5. **DO NOT TIGHTEN THESE BOLTS**
6. Slide the flat plate with two 10mm nuts and a wire welded on into the chassis. Fit the 10mm bolts and washer through the two holes in the side of the bracket and through the chassis. These bolts screw into the welded nuts in the flat.
7. Drill a 10mm hole through the original support bracket which covers the top support arm on No. 1 bracket (see diagram 2). Fit using 10mm bolt and nut.  
NOTE: if the vehicle is 10/92 onward model, the original support bracket MUST be replaced with bracket supplied, using original 8mm bolts.



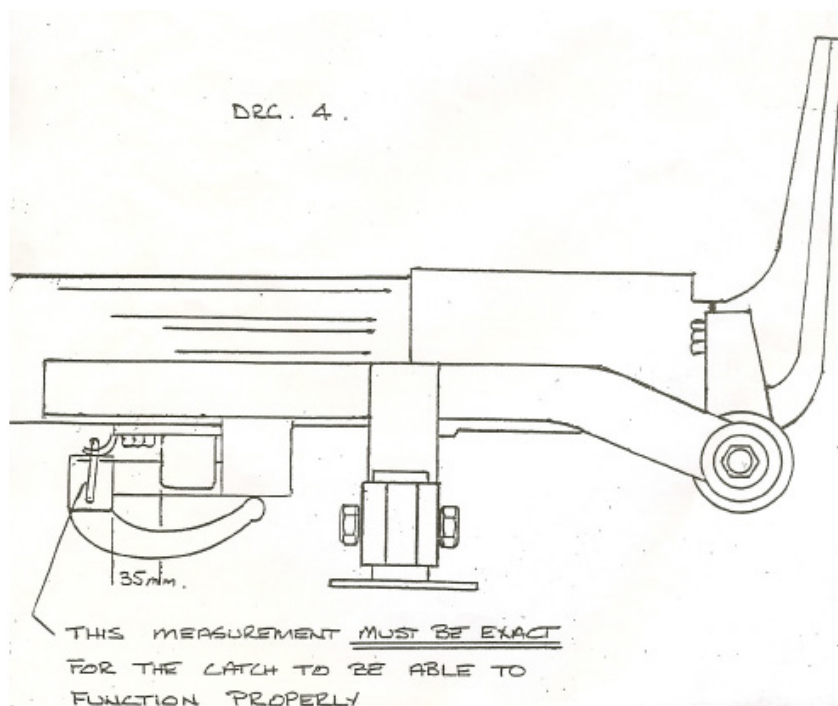
8. Tighten the two bolts through the side of the chassis first and then tighten ALL bolts on the bracket.  
**DO NOT TIGHTEN THE BOLT ON THE WIRE.**
9. Fit the No. 2 bracket over the plastic bumperette, mark and drill through the top two holes to 14mm dia as shown in diagram 310. Fit the plastic corner and mudflap onto the car using all original bolts and screws.
10. Fit the plastic corner and mudflap onto the car using all original bolts and screws.
11. Fit the No. 2 bracket over the plastic corner as previous and loosely fit the two 12mm x 35 bolts into the tapped holes in the No. 1 bracket through the top two holes \* Use flat star washers only with these bolts.

# Kaymar

## Fitting Instructions



12. Fit the three remaining 12mm x 30 bolts into the three holes underneath. These line up with the No. 1 bracket. NOTE: Slowly lower the bottom tailgate to make sure it clears the two bolts fitted in step 11, as some '80 series bodies are off centre on the chassis
13. Slide the wheel carrier onto the pivot. Fit the greased bearing, washer and nut. Tension the nut so it is firm (not tight). Fill cap with grease, fit split pin and cap. Swing the carrier into the closed position and make sure it is sitting straight and the main bottom rail is parallel with the tailgate.  
**Tighten all bolts.**
14. Swing the wheel carrier into the closed position and fit the lock as shown in diagram 4. It is vital to maintain the 35mm gap for the catch to work correctly. It is vital to maintain the 35mm gap for the catch to work correctly.



# Kaymar

## Fitting Instructions



15. Mark and drill through the chassis, the two holes for the lock plate. Fit with 2 x 10mm bolts supplied, into the flat plate which has 2 tapped holes. This must be passed into the chassis from behind and lined up with the holes in the catch plate
16. Fit the spare wheel onto the carrier.  
Fit and wire the auxiliary lights supplied. (see auxiliary light fitting sheet)  
If you remove your towbar you can now refit it.  
First – remove the two fine thread bolts from the bottom of the corner bracket and the nut from the bolt on wire.  
Lift the towbar into its original position being very careful to line up the bolt on the wire through the new hole you drilled in the towbar arm. All bolts can now be re-fitted and tightened.
17. Please check fuse size to cover for extra lights on bar (5amp higher recommended).
18. The number plate is to be relocated using the number plate bracket supplied, in the centre of the wheel. Fitting instructions for the bracket and light are found in the yellow number plate light box.
19. For barn door model vehicles check that the right hand door does not open far enough to hit the wheel carrier. If it does, see the separate sheet on door stop adjustments.

### Number Plate Mounting

Ensure the number plate is mounted tight against the tyre and the wiring for the light is passed through the spare wheel as shown.



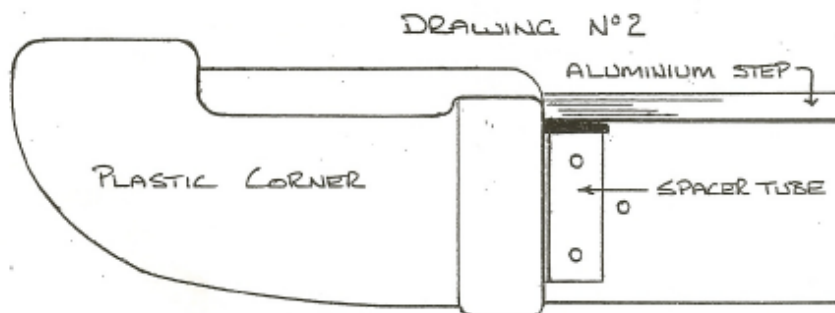
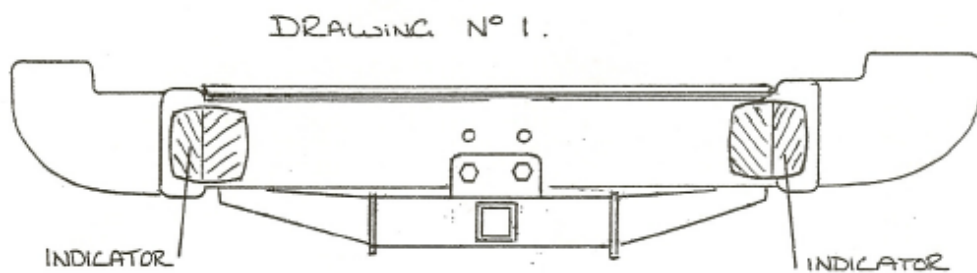
# Kaymar

## Fitting Instructions



### AUXILIARY LIGHT FITTING SHEET

All light kits come complete with mounting screws and wiring harness. Drawing No. 1 shows the fitted position of the lights.



1. Hold the spacer tube with the black cap against the rear chassis rail as shown in drawing No. 2 and spot drill through the two holes
2. Mark the third hole as shown and drill 3 holes to 7mm diameter
3. Padlock fitment  
If fitting a padlock ensure you secure with a cable tie to avoid rubbing or touching paintwork on tailgate.

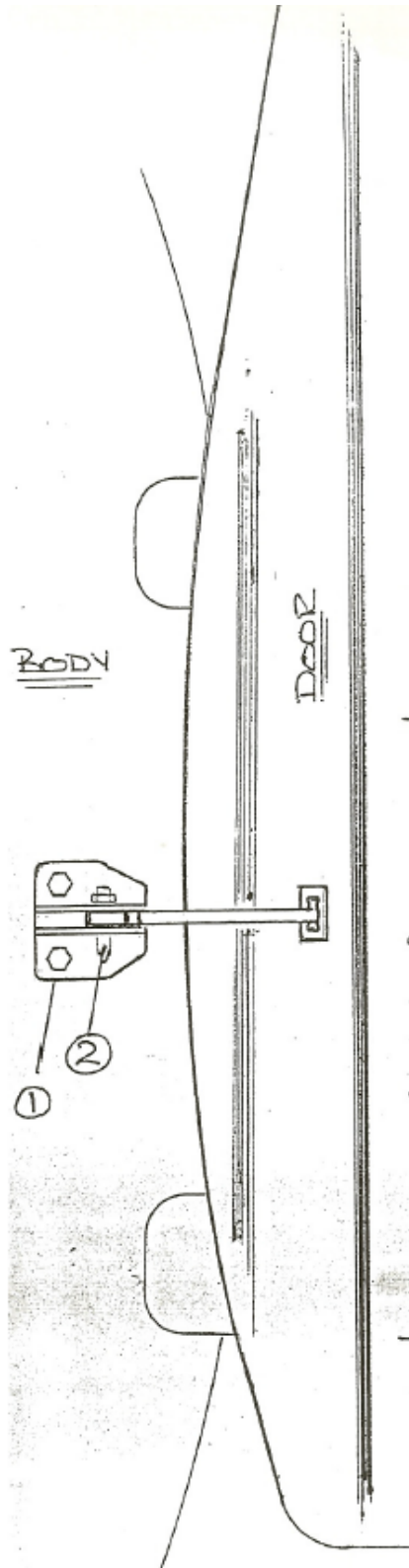
# Kaymar

## Fitting Instructions



STANDARD MODEL ONLY

BARN DOOR STOP ARM ADJUSTMENT



The door stop must be adjusted so as the door cannot open far enough to hit the wheel carrier

Remove the pivot pin 2 by gently tapping it upward with a small hammer

Remove the two 6mm bolts which hold the bracket 1 to the body

Slot the two bolt holes so as the bracket can move toward the front of the vehicle 5-6mm

Re-assemble on the vehicle if twin carriers are fitted this must be done to both doors

# Kaymar

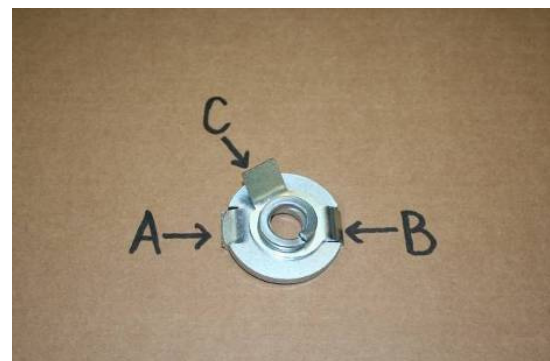
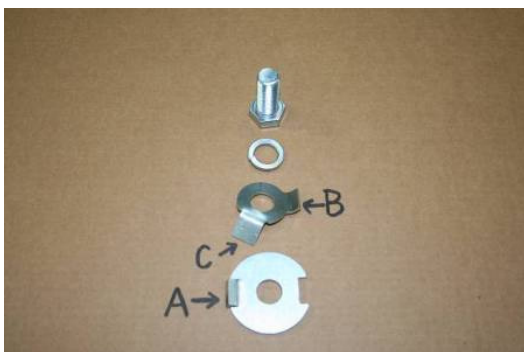
## Fitting Instructions



### LOCK TAB WASHER

1. Fit the top slide (wheel holder) into the wheel carrier.
2. Fit spring washer and small lock tab washer onto 16mm bolts.
3. Fit large 5mm thick washer onto bolt with lug (A) facing away from the head of the bolt.
4. Apply a thin film of grease to the bolts.
5. Screw 16mm bolt through the slots in the wheel carrier housing into the top slide. Make sure that the lug (A) fits into the slot first. Make sure you fit both bolts.
6. Fit the wheel and wheel lock plate.
7. Open the wheel carrier and stand behind it. PULL THE TYRE INTO THE CARRIER FRAME SO THAT THE TYRE SITS HARD AGAINST THE FRAME.
8. Tighten the two 16mm bolt to at least 140nm, make sure tab (B) fits into the cut-out in the 5mm washer.
9. Continue turning the bolt unit one flat on the hexagon is aligned with tab (C) of the lock tab washer.
10. Flatten tab (C) onto a flat of the hexagon on the bolt head. Do the same with bolt bolts. Make sure the whole tab sits flat on the bolt head.

### THIS MUST BE DONE



# Kaymar

## Fitting Instructions



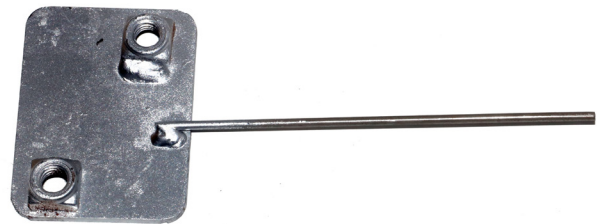
### BK1110 80 SERIES RHS STANDARD CARRIER

| QUANTITY | DESCRIPTION |
|----------|-------------|
|----------|-------------|

|   |  |
|---|--|
| 1 | BOLT M12 X 35 X 1.75                                     |
| 2 | BOLT M12 X 30 X 1.75                                     |
| 2 | BOLT M12 X 35 X 1.25 FINE THREAD                         |
| 5 | BOLT M10 X 30 X 1.5                                      |
| 5 | WASHER FLAT M12 X 30 HD                                  |
| 5 | WASHER SPRING M12  |
| 1 | WASHER STAR M12  |
| 5 | WASHER FLAT M10 X 20                                     |
| 5 | WASHER SPRING M10  |
| 1 | NUT M12 X 1.75   |
| 1 | NUT M10 X 1.5  |
| 1 | NUT M8 X 1.25  |
| 1 | BOLT ON WIRE M12 X 35 X 1.75 300 MM WIRE                 |
| 1 | BACKING PLATE - 2 X 10MM WELD NUTS ON 300 MM WIRE LK829R |
| 1 | CHASSIS REPLACEMENT BRACKET R                            |
| 1 | BACKING PLATE 2 MM NUTS WELDED ON - 10MM X 2 - LK269A    |
| 1 | CATCH SLIM LINE  |
| 1 | NUTS ON PLATE M12 X 1.25 X 2 FINE THREAD ON 300 MM WIRE  |
| 1 | DUST CAP FOR CARRIERS                                    |
| 1 | BEARING SMALL SILVER FOR STANDARD CARRIER                |
| 1 | WASHER FLAT - BEARING FOR PIVOT                          |
| 1 | NUT CASTLEATED FOR CARRIER PIVOT                         |
| 1 | SPLIT PIN FOR CARRIER PIVOT                              |
| 1 | REFLECTOR  |
| 1 | 3M PLASTIC STICKER                                       |



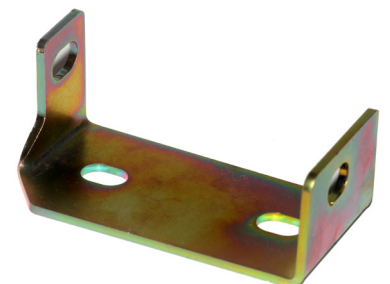
*bolt\_on\_wire\_M12x35x1.75\_300mm\_wire*



*backing\_plate\_2x\_10mm\_welded\_nuts\_on\_300mm\_wire*



*backing\_plate\_2mm\_nuts\_welded\_on\_10mm\_x2*



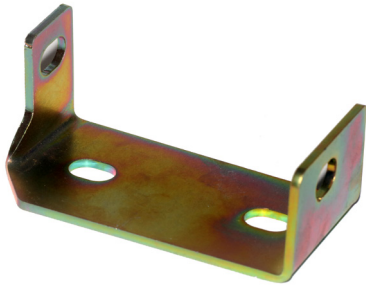
*chassis\_replacement\_bracket\_L*



*nuts\_on\_plate\_M12x1.25x2\_fine\_thread\_on\_300mm\_wire*



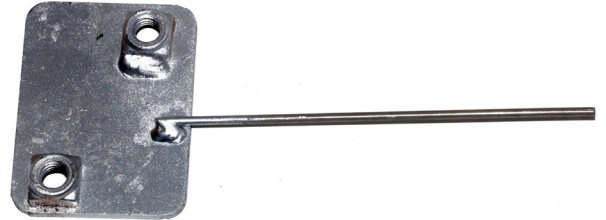
# BK1110 80 SERIES RHS STANDARD CARRIER



*chassis\_replacement\_bracket\_L*



*bolt\_on\_wire\_M12x35x1.75\_300mm\_wire*



*backing\_plate\_2x\_10mm\_welded\_nuts\_on\_300mm\_wire*



*nuts\_on\_plate\_M12x1.25x2\_fine\_thread\_on\_300mm\_wire*



*backing\_plate\_2mm\_nuts\_welded\_on\_10mm\_x2*